

Myobrace® for Kids



Use one hour daily plus overnight while sleeping.

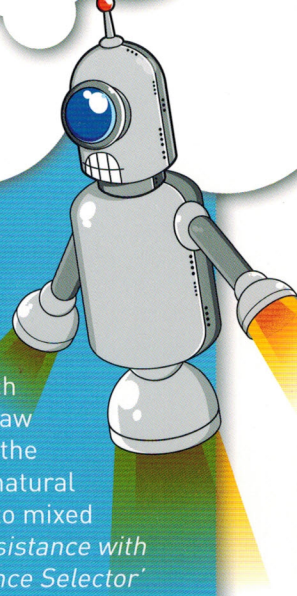
- 1 **Dynamiccore™ with Frankel Cage** - assists in widening and developing the jaws.
- 2 **Tongue tag, guard and elevators** - train the tongue to position properly.
- 3 **Extended lip bumper** - discourages strong, overactive lip muscles.

mixed Dentition

Myobrace® for Kids is a three-stage appliance system designed specifically to correct mouth breathing and poor oral habits, which assists in treating upper and lower jaw development problems. This allows the permanent teeth to align into their natural position. Most effective in the early to mixed dentition stage, 6 – 10 years. For assistance with appliance selection, use the 'Appliance Selector' feature on myoresearch.com

Designed for:

- Class II Division 1 + 2 malocclusion.
- Anterior (upper + lower) crowding.
- Deep bite.
- Open bite.



6 - 10 YEARS

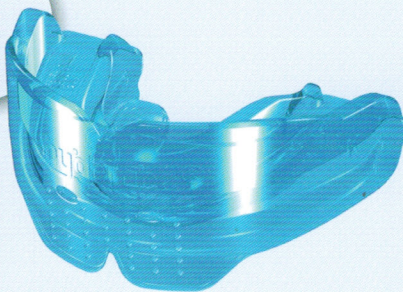
All *Myobrace®* appliances are designed to correct habits, develop the maxilla and mandible, and align the teeth. Each stage focuses on a particular treatment goal.



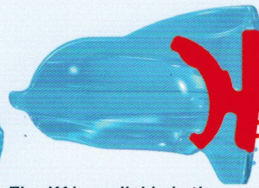
HABIT CORRECTION

Establish nasal breathing.

STAGE 1



4-6 months



The *K1* is available in three sizes and comes in pink, blue and clear.

K1 APPLIANCE - PERSPECTIVE VIEW (left)

K1 - CROSS SECTION (above)

MYOBACE® K1

The *K1* focuses on establishing nasal breathing and myofunctional habit correction.

It is soft and flexible which gives the best compliance, adapts to any arch-form and malocclusion, as well as optimises staying in place at night.

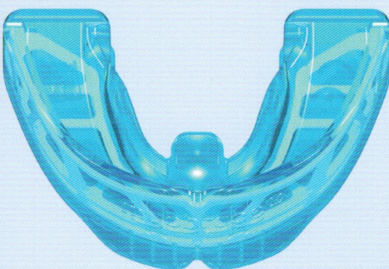
Only move to the *K2* when the *K1* stays in at night and nasal breathing is established.



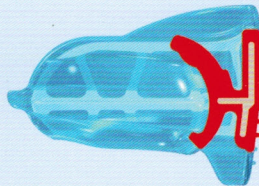
ARCH DEVELOPMENT

Establish correct tongue position.

STAGE 2



4-6 months



The *K2* is available in three sizes and comes in pink, blue and clear.

K2 APPLIANCE - TOP VIEW (left)

K2 - CROSS SECTION (above)

MYOBACE® K2

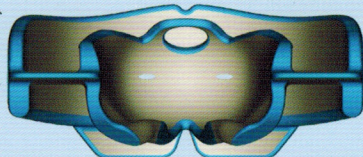
The *K2* focuses on arch development and continuing habit correction. It features a *Dynamiccore™* which assists in developing the upper and lower arch form, allowing more room to establish the correct tongue resting position and correct swallowing patterns. Only move to the *K3* when the arch form is improved, correct tongue position and swallowing patterns have been established, along with good dental alignment.



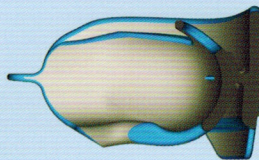
FINAL ALIGNMENT AND RETENTION

Maintain correct lip posture and swallow.

STAGE 3



4-6 months



The *K3* is available in three sizes and comes in pink, blue and clear.

K3 APPLIANCE - REAR TECHNICAL VIEW (left)

K3 - CROSS SECTION (above)

MYOBACE® K3

The *K3* focuses on completing habit correction, final tooth alignment and retention with its firmer polyurethane construction. The hollow tongue tag facilitates final tongue position directly on the correct spot. It also acts as a retainer until the permanent dentition erupts. The *K3* can be replaced with transition to the *T3* and *T4* for final dental alignment in the developing permanent dentition.