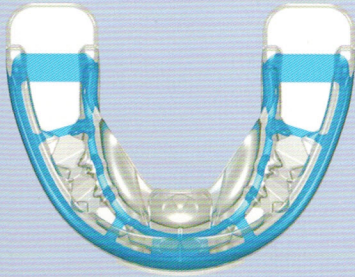




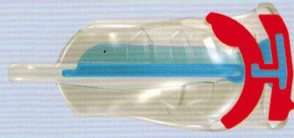
DENTAL ALIGNMENT

Tooth alignment once habits and compliance are good.

STAGE 3



4-6 months



The T3 is available in seven sizes.

T3 APPLIANCE - TOP VIEW (left)
T3 - CROSS SECTION (above)

MYOBACE® T3

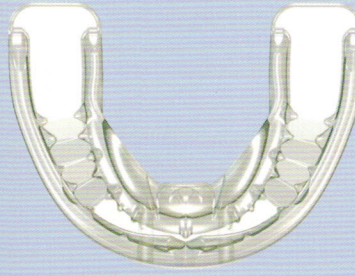
The T3 is the tooth alignment stage of treatment. The *Dynamicore™* acts as an arch wire and the tooth slots increase arch length, along with assisting dental alignment. Compliance with the T3 is essential to prevent losing arch form space, which occurs when the appliance is not worn regularly. The T3 predominately focuses on dental alignment, but still has habit correction features similar to the T1 and T2. Move to the T4 when satisfactory dental alignment has been achieved.



DENTAL ALIGNMENT

Tooth alignment once habits and compliance are good.

STAGE 3



The T3N is available in seven sizes.

T3N APPLIANCE - TOP VIEW (left)
T3N - CROSS SECTION (above)

MYOBACE® T3N

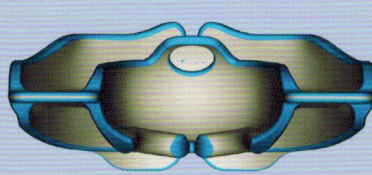
The T3N is identical to the T3, except it does not contain the inner *Dynamicore™*. This makes it more flexible with better retention. It is suitable in some cases to use initially at night time while sleeping, in conjunction with use of the T3 during the day. An alternative is to use the T2 at night and the T3 during the day for 1-2 months, followed by the T3 at all times. Move to the T4 at night after 2 months when it remains in the mouth every night.



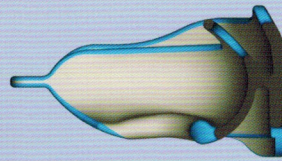
RETENTION

Retain dental alignment while maintaining correct habits.

STAGE 4



4-6 months



The T4 is available in medium and large.

T4 APPLIANCE - REAR TECHNICAL VIEW (left)
T4 - CROSS SECTION (above)

MYOBACE® T4

The T4 is the final appliance in the *Teens* series, which continues all habit corrections, retains the dental alignment and reinforces good lip posture and nasal breathing. The T4 focuses on final alignment of the teeth and jaws, and is used as a retainer when treatment is completed.

The hollow tongue tag encourages the tongue to position on the spot. It can be used as a long-term retainer.

Myobrace® for Teens Appliance Sequence



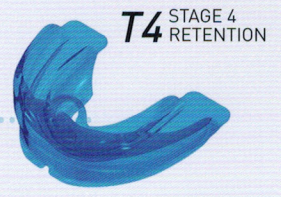
Establish nasal breathing and correct arch form.



Establish correct tongue position, lip posture and swallow.

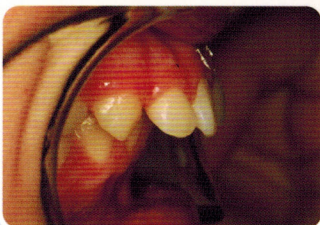
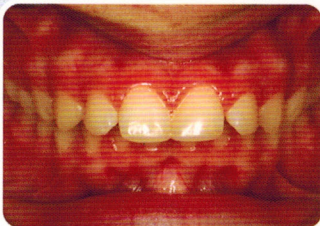


Tooth alignment once compliance and habits are at an acceptable level.



Retain dental alignment while maintaining correct habits.

Case Study - Treatment using the Myobrace® for Teens Appliance Series



This patient had a severe Class II malocclusion at age 13 years and 6 months. The Myofunctional Orthodontic Evaluation (MOE) indicated that the patient was a mouth breather with a reverse swallowing pattern and aberrant lip function.

Significant improvements to the dental alignment and facial development occurred after 12 months, using the Myobrace® for Teens series to establish nasal breathing and correct myofunctional habits. Complete Class II correction.